



Fig. 1-2. Damage caused by *Holopothrips tabebuia*, **new species**. 1, *Tabebuia heterophylla*; 2, *Tabebuia aurea*.

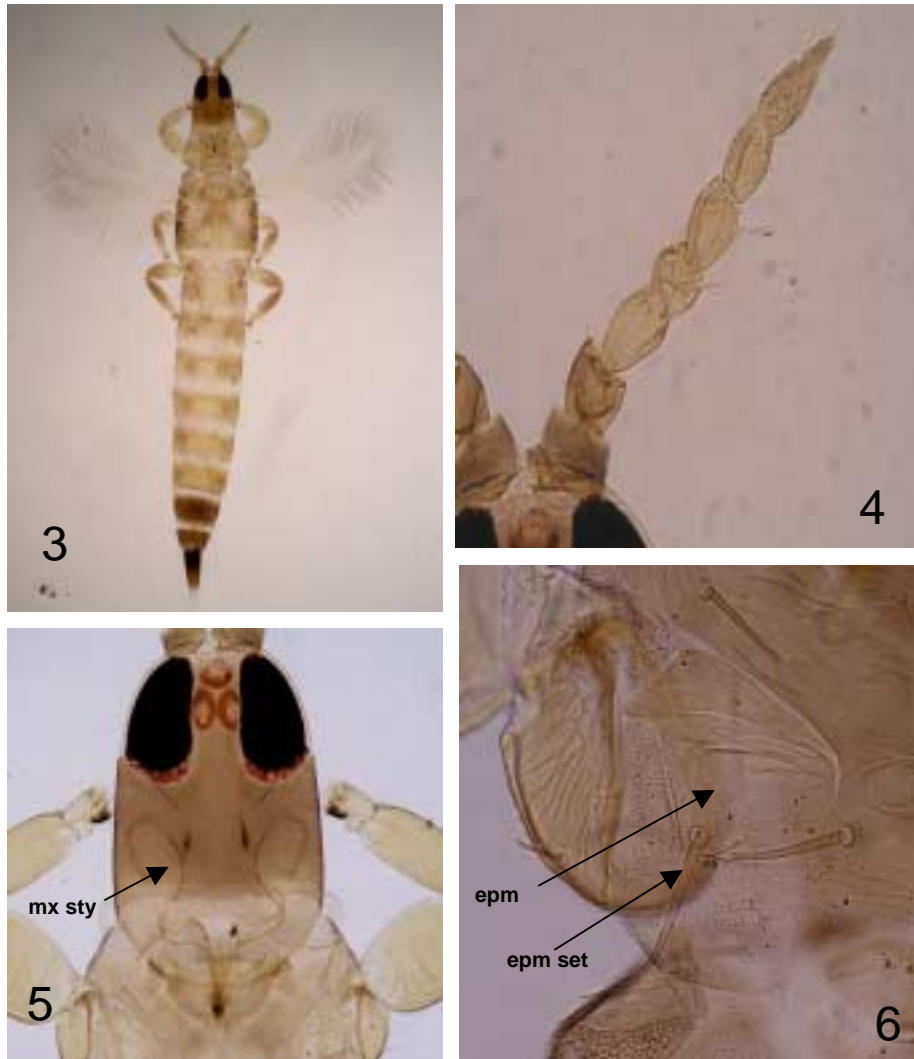


Fig. 3-6 *Holopothrips tabebuia*, **new species**. 3, Female holotype; 4, Female holotype antenna; 5, Female holotype head maxillary stylets (mx sty); 6, Female holotype epimeron (epm), long epimeral seta (epm set).

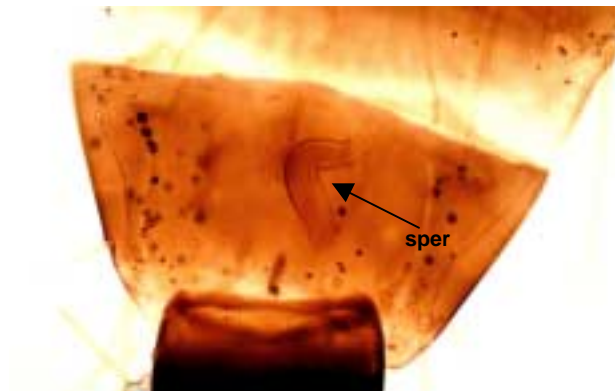


Fig. 7-9. *Holopothrips tabebuia* ,**new species**. 7, Female holotype metanotum and median seta (mdn); 8, Female holotype pelta; 9, Female holotype tube spermateca (sper).

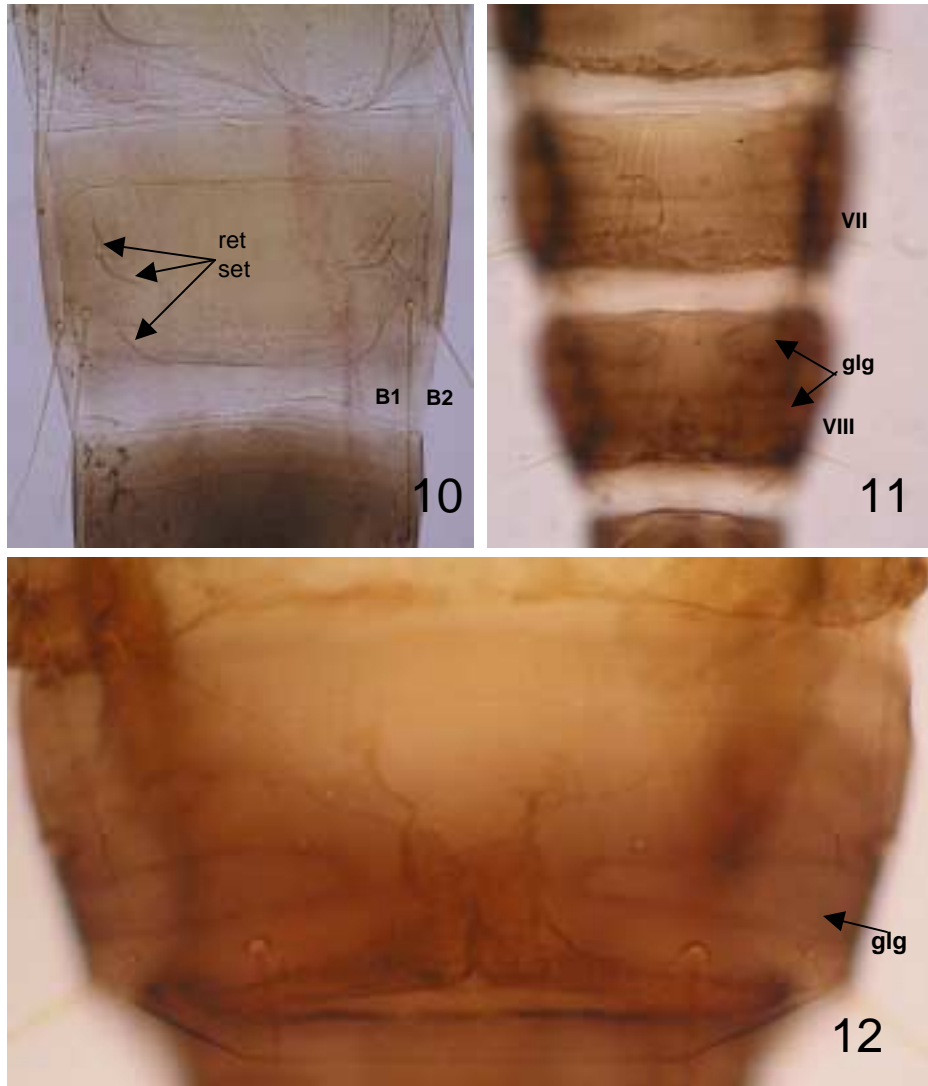


Fig. 10-12. *Holopothrips tabebuia*, **new species**. 10, female holotype tergite retainer seta (ret set); 11, male paratype sternite glands VII and VIII (glg); 12, male paratype tergite gland VIII (glg).