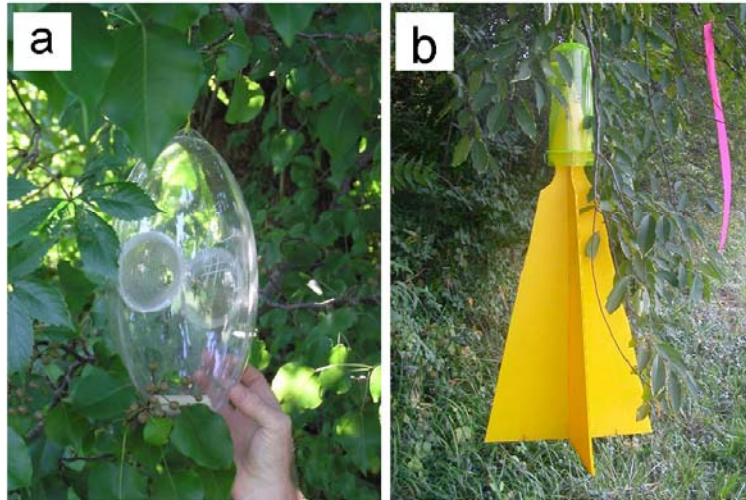
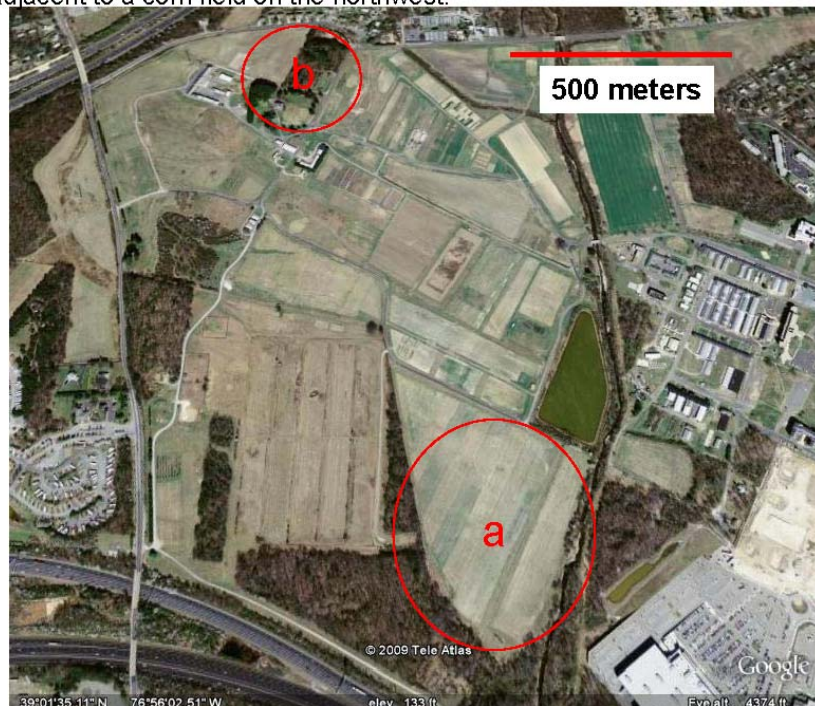


Supplemental information for the paper by Jeffrey Aldrich et al.

Online Figure 1: The two types of traps used in field tests:
a) Container trap and, b) Baffle trap.



Online Figure 2: Aerial view of BARC-West 2008 field sites: a) deciduous trees bordering strips of soybean and corn and, b) mature stands of coniferous trees adjacent to a corn field on the northwest.



Online Figure 3: The brown marmorated stink bug, *Halyomorpha halys*:
a) Adult female and, b) adult male (top) and fifth-instar nymph
(approximately 2.5 x life size).

